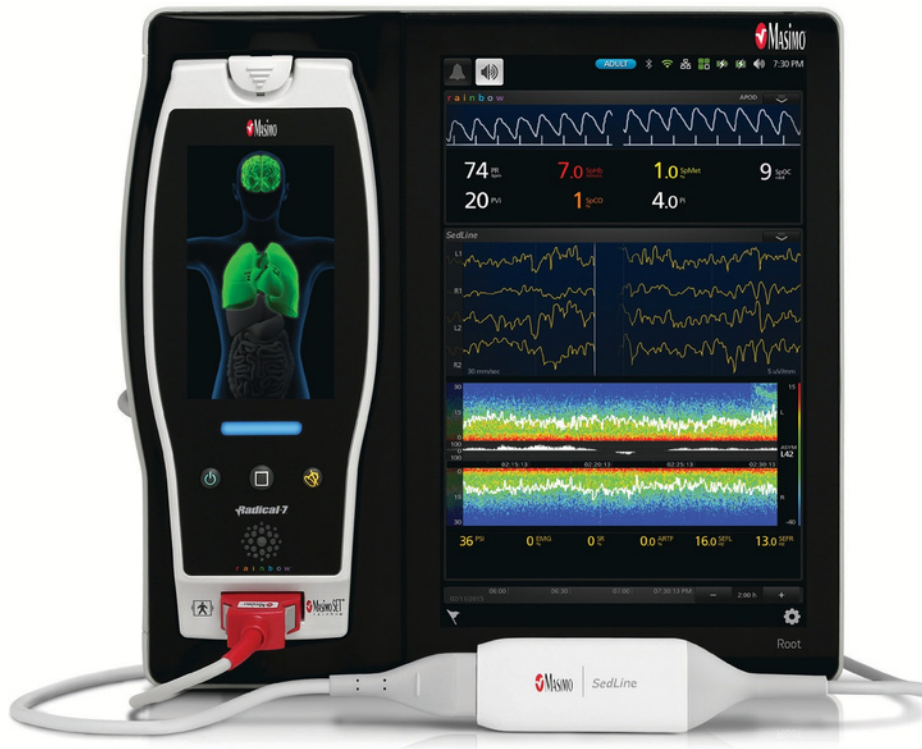


Root® with SedLine® Brain Function Monitoring

A More Complete Picture Starts With More Complete Data

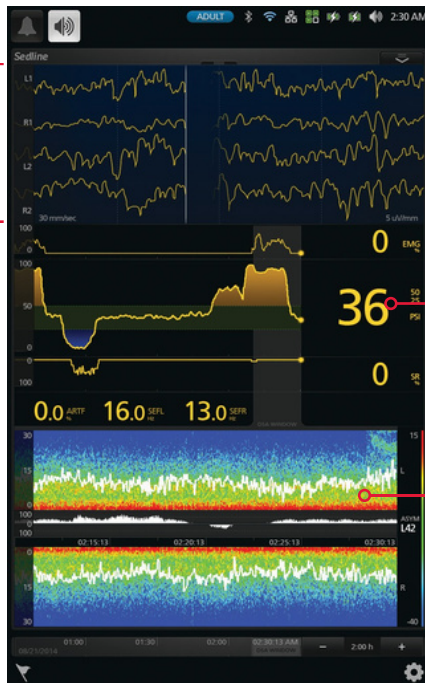


Root with SedLine Brain Function Monitoring helps clinicians monitor the state of the brain under anesthesia with bilateral data acquisition and processing of Electroencephalogram (EEG) signals

- > Four simultaneous channels of frontal EEG waveforms
- > Patient State Index (PSi) is a processed EEG parameter that is related to the effect of anesthetic agents
- > A Density Spectral Array (DSA) display, which contains left and right spectrograms representing the power of the EEG on both sides of the brain
- > Multiple screen views, which expand information while enabling customization in the operating room and intensive care unit



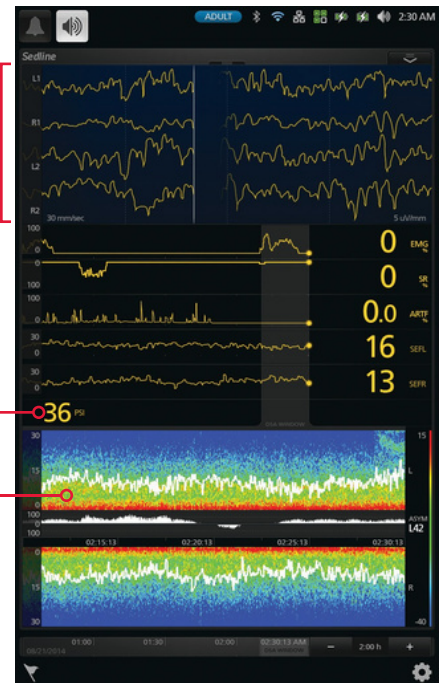
Monitor Display



Four channels of bilateral EEG waveforms

Patient State Index (PSi), a processed EEG parameter related to the effect of anesthetic agents

The DSA represents activity in both sides of the brain



The SedLine EEG Sensor

- > Four active leads collect data from the frontal lobe
- > Allows simultaneous application of SedLine and O3® Regional Oximetry sensors
- > Soft foam pads improve patient comfort



The SedLine module plugs into the Root patient monitoring platform via Masimo Open Connect™ (MOC-9™) ports

SedLine Specifications

PHYSICAL CHARACTERISTICS	ENVIRONMENTAL
Module Physical Dimensions	Module Operating Conditions
Width 1 3/10 in (33mm)	Temperature at Ambient Humidity 5-40° C
Length 4 in (102mm)	Module Storage and Shipping Conditions
Thickness 3/4 in (19mm)	Temperature at Ambient Humidity -40-70° C
	Storage Humidity 15-95%, non-condensing
	Exposure to Pressure 500-1060 mbar

Sensor Specifications

Patient Weight > 30 kg	Ground Electrode CB
Application Site Forehead	Reference Electrode CT
Active Channels 4	Duration of Use Maximum of 24 hours
Active Electrodes L1, L2, R1, and R2	Latex Content Does not contain natural rubber latex

Caution: Federal (USA) law restricts this device to sale by or on the order of a physician. See instructions for use for full prescribing information, including indications, contraindications, warnings, and precautions.

Request a quote

Sales / customer service
 sales@norsomedical.co.uk (NI)
 sales@norsomedical.ie (ROI)

Website

www.norsomedical.com

Phone Number

Call 9:00 a.m. - 5:00 p.m. Monday - Friday
 02890 343927 (NI)
 01 5314337 (ROI)

