

mindray

Innovation Untethered

TE Air

New generation

wireless handheld ultrasound



The developing path of clinical POCUS

Any time

Medical Imaging: Diagnostic

Radiology
Cardiology
OBG
...

Clinical department POCUS Triangle

Emergency
medicine
Critical Care
Anesthesia

More clinical scenarios: Specific applications

Emergency Medical Service
Sport medicine
Outpatient
Perioperative period
Delivery Room
Primary Care
...

Any where

A novel imaging solution is required

Clinical Capabilities

- Image quality for confident diagnose
- Applications meet different requirement of types of patients
- Qualified Doppler performance for comprehensive diagnosis

Performance

Round the Clock Service

- Easy to use;High portability
- All day work battery solution
- High level hospital infection control
- Smart functions for efficiency diagnosis

Usability

Efficient Healthcare

- Mobile device compatibility
- Connection with medical information system

Connectivity

TE Air: New Generation Handheld Ultrasound (HHU)

Untethered, with Premium Performance

Professional diagnostic grade image
quality
Dedicated application presets
Various imaging modes



i3P

Untethered, with Extreme Usability

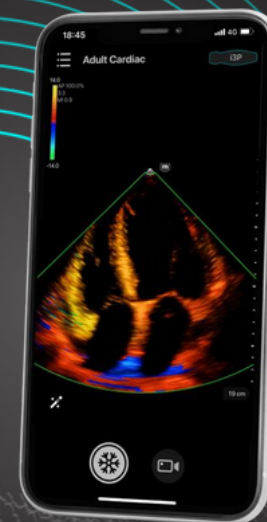
Wireless brings freedom
Extreme portability
Professional design

Untethered, with Seamless Connectivity

Working with multiple devices
Professional information
management

Untethered, with Premium Performance

Premium quality image is the guarantee of confidence



Professional diagnostic grade image quality

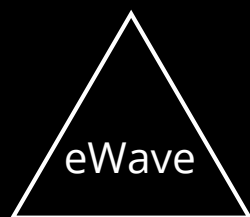
Platform, dedicated for wireless system

eWave Platform

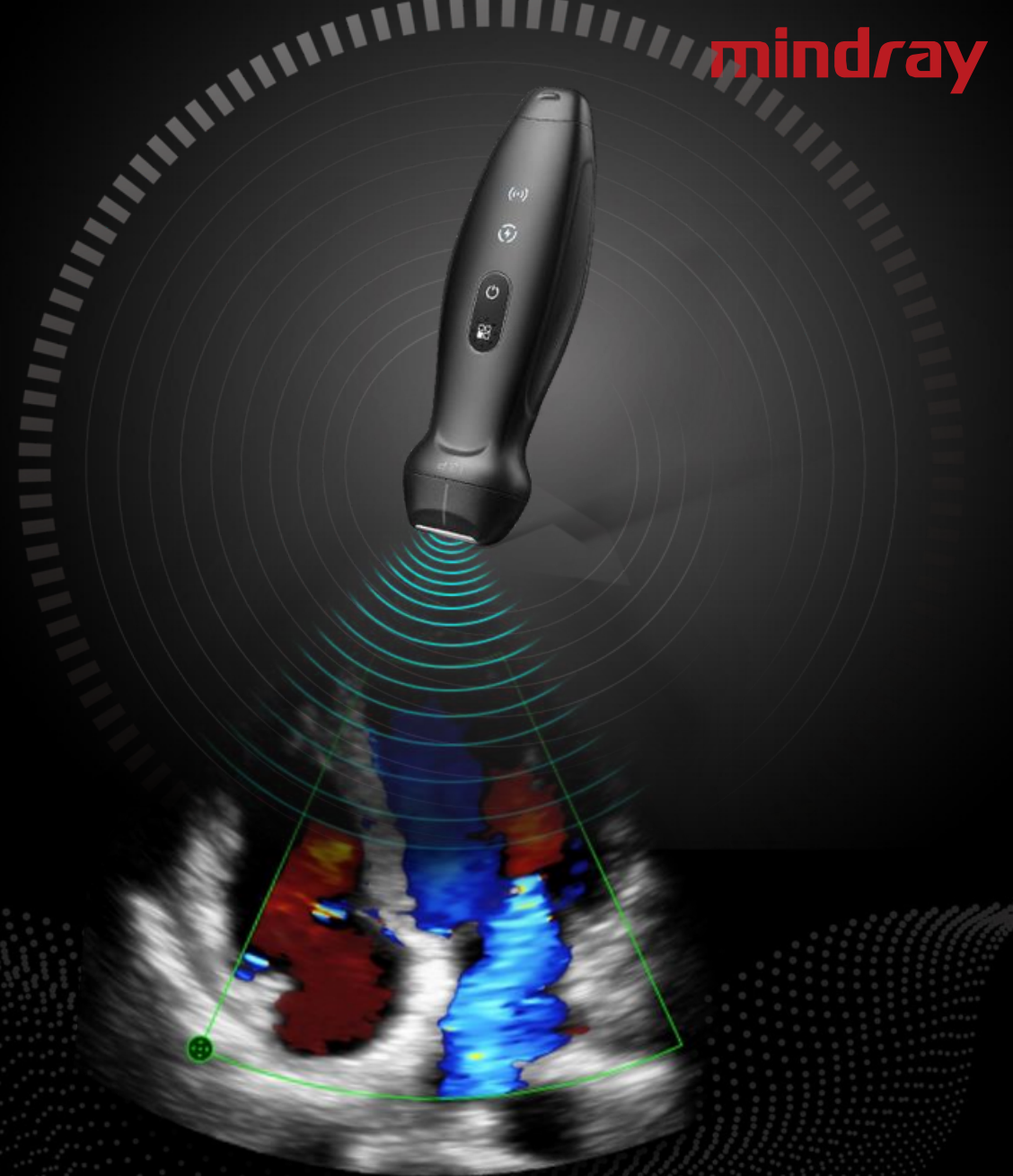
- Efficiently receive, process, and transmit echo wave to achieve ultimate image quality with optimal power consumption

**Acoustic Boost
Technology**

**Multistage Enhanced
Beamforming**



**Radio Turbo
Technology**

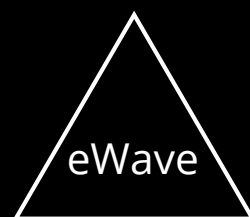


Professional diagnostic grade image quality

Platform, dedicated for wireless system

Acoustic signal \uparrow 125%
Efficiently receive and convert
acoustic energy thru 2nd
generation Single Crystal tech

Acoustic Boost Technology



Multistage Enhanced Beamforming

Digital signal \uparrow

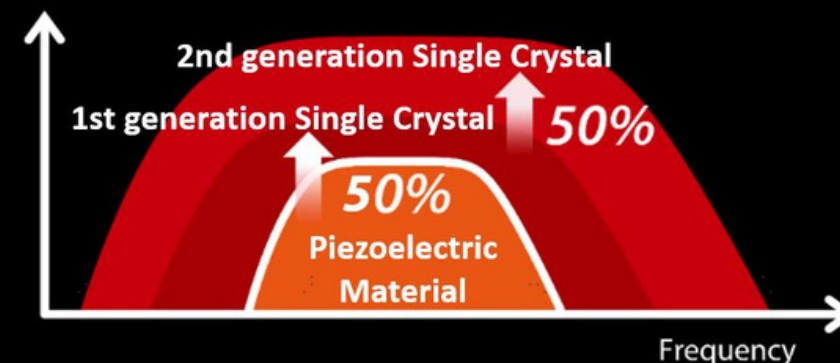
Improve beamforming performance
with optimal energy consumption

Radio Turbo Technology

Transmission efficiency \uparrow

Wireless transmission of larger
amounts of data with optimal
energy consumption

Acoustic Boost Technology



Clinical Benefit of eWave:

- Professional performance: premium HHU image quality (2D resolution, color sensitivity, high frame rate) to meet the needs of diagnosis;
- Low power consumption: low power consumption under the premise of high performance, meeting the application scenarios of wireless HHU.

High quality image for professional diagnosis –B mode

mindray

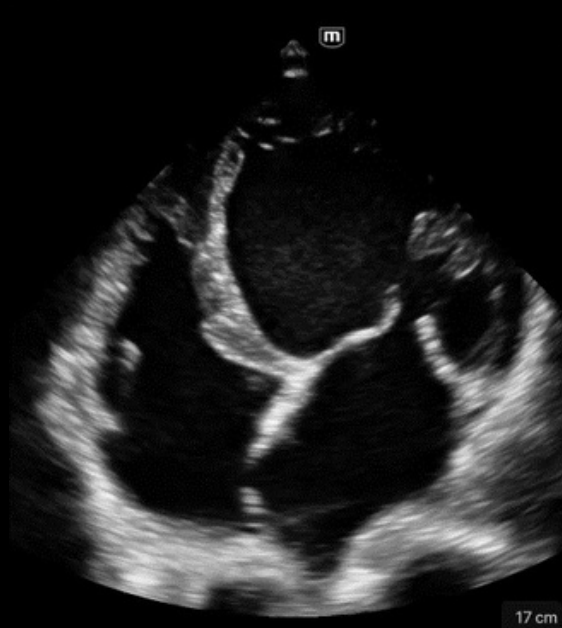
High 2D resolution



Pericardial effusion

Clear boundary, even small amount of effusion can be clearly seen

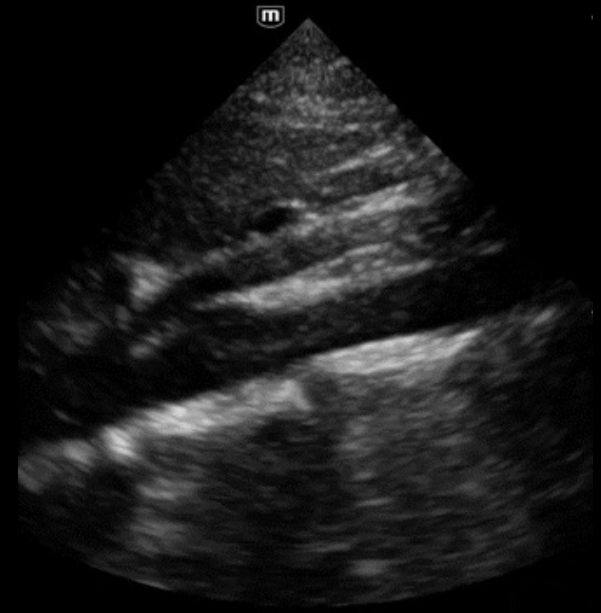
High frame rate



Cardiac motion

Clear valves without sacrificing frame rate

High penetration



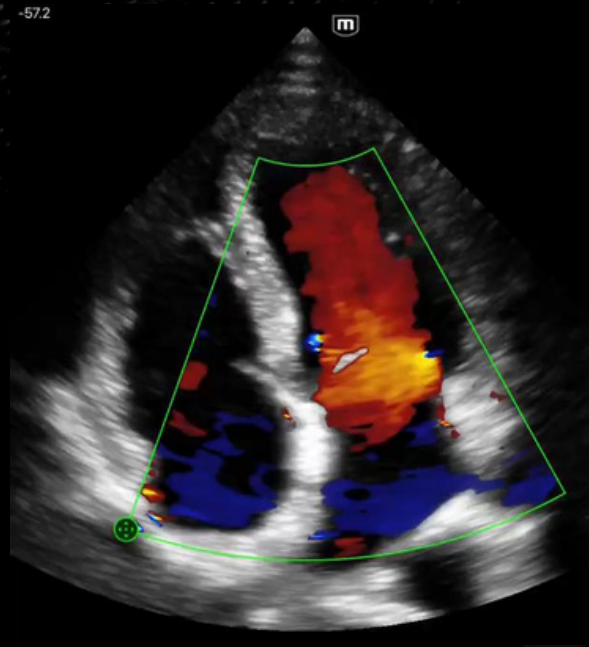
Abdominal Aorta

Excellent penetration, clear Aorta image even for obese patient

High quality image for professional diagnosis –Doppler mode

mindray

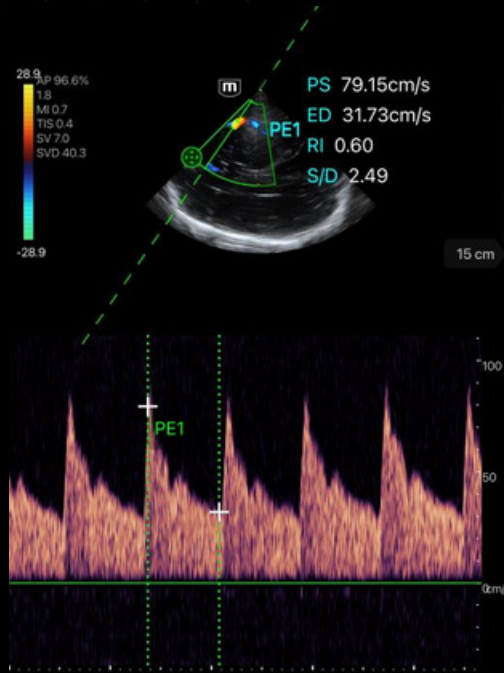
High velocity flow



Cardiac flow

Blood flow in different speed and directions is clearly layered

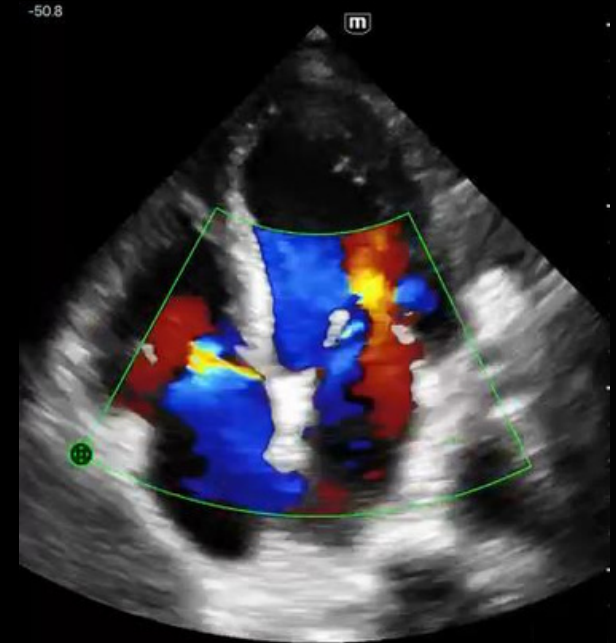
Sensitive PW



Transcranial Doppler Image

Best TCD image in HHU
Sensitive blood flow of the middle cerebral artery in deep area

Minor flow



Regurgitation

Great color flow sensitivity of Mitral Regurgitation and Tricuspid Regurgitation

Dedicated application presets

One probe, multiple applications

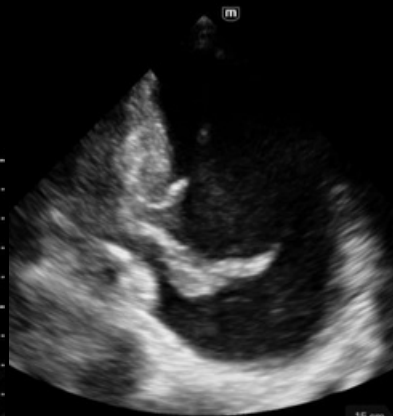
Left ventricular
long axis



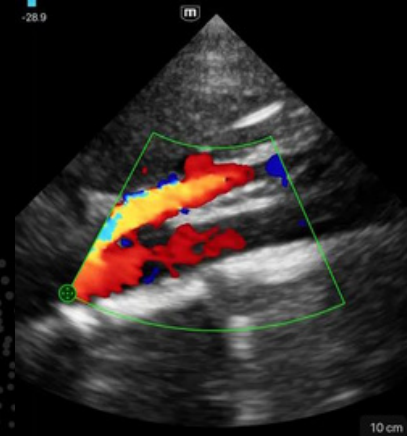
Inferior
Vena Cava



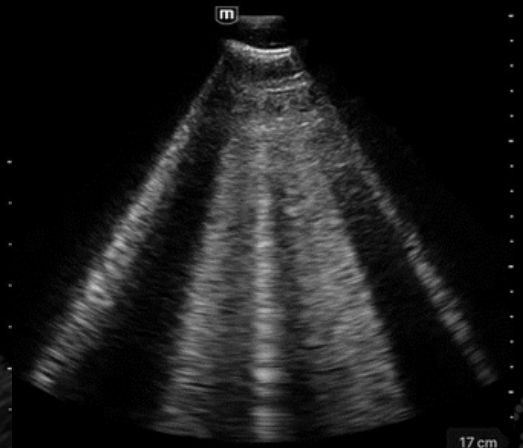
Pleural
effusion



Abdominal
aortic blood
flow



Lung B-
Line ...

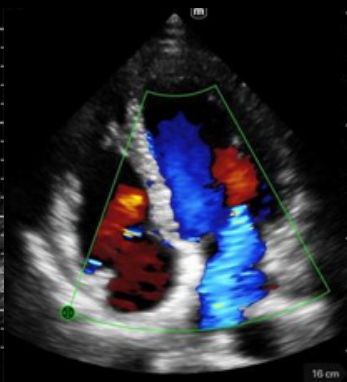


Comprehensive for professional scanning

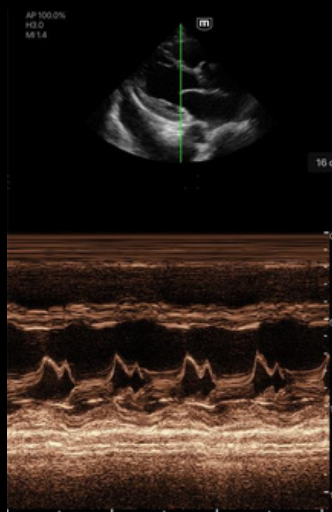
B mode



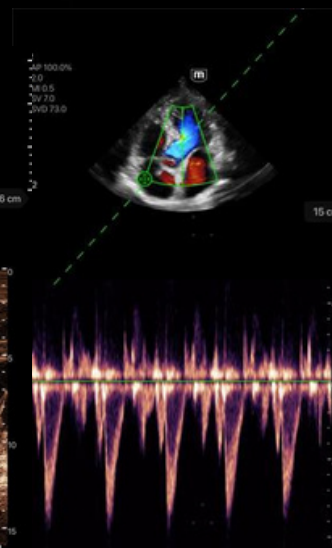
Color mode



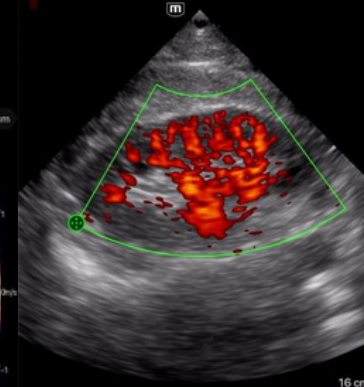
M mode



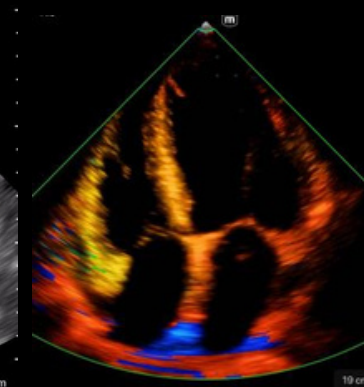
PW mode



Power mode



TDI mode



Untethered,
with Extreme Usability



Designed for multiple clinical scenarios



Emergency Department

Triage, Medical Emergency Team: FAST/eFAST, focused cardiac, abdominal, transcranial and basic pulmonary



Critical Care

Ward round, consultation: cardiac, pulmonary, FAST/eFAST, volume assessment, TCI



Emergency Medical Service

Early diagnosis: FAST/eFAST



Cardiology office

Quick diagnosis of Cardiac function; screening for cardiac pathology

Small size, standby anytime, easy to disinfect, easy to use...

Wireless brings freedom

Hospital infection control solution :

- Easily kept clean
 - Fully immersed in the disinfectant
 - Entirely enclosed by a sterile cover to avoid contamination
- e.g. trauma, pericardial effusion aspiration...



Wireless for extended scenarios :

- Ambulance
- Helicopter
- EM Room
- ICU
- In field
- Anywhere, anytime...

Wireless brings freedom

mindray

Hospital infection control solution

- No cable, easily encased in a sterile cover
- **Highest IP68* waterproof and dustproof, fully**
immersed during the high level disinfection
- >50 mainstream cleaners and disinfectants



*IP = Ingress Protection
6 = Dust Tight
8 = Survives being submerged in
water up to 1m deep for 50 minutes

Extreme portability for more scenarios

Small and light



<200g

Flexible charging solution



Air Capsule:
Wireless charging case

Magnetic charging cable
Wireless charging holder
on the TEX20 Series

Flexible charging solution

Big power in a small capsule

Air Capsule (charging + protective case)

- Support the TE Air for all-day use
- Fast charging for TE Air: 35min
- Wireless or wired charge for Air Capsule



Wireless charging



Pocket-size



Flexible charging solution

mindray

Powerful, ready to scan

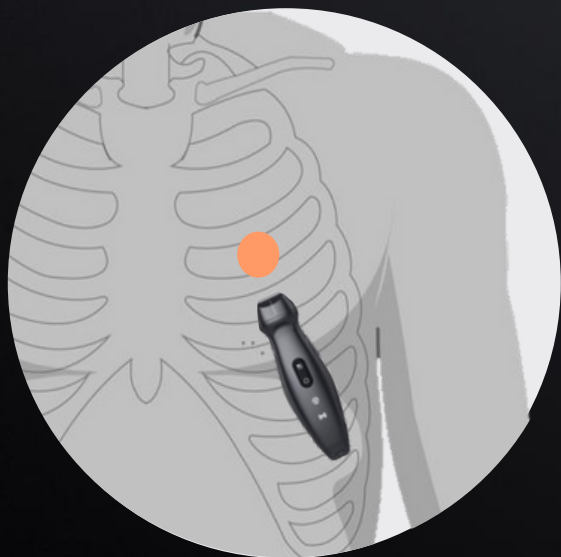
Magnetic charging cable

Mount and charge without dragging damage

- **35min** charging from 0% to 90%
- **90min**



Professional design, for easy scanning



**Small footprint for a better
intercostal window**



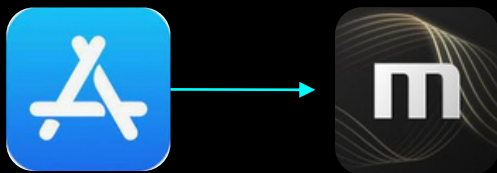
**Programmable button
for easily remote
control**



- **Professional ultrasound software**
- **Intuitive user interfaces**
- **Easy-to-use workflow**

Designed for every speed challenge

- **One-handed operation APP**
- **Intuitive user interfaces**
- **Simple gesture operations**



APP Compatibility
Model: iPhone 7 or newer
Operation system: IOS 13 or newer



Professional design

mindray

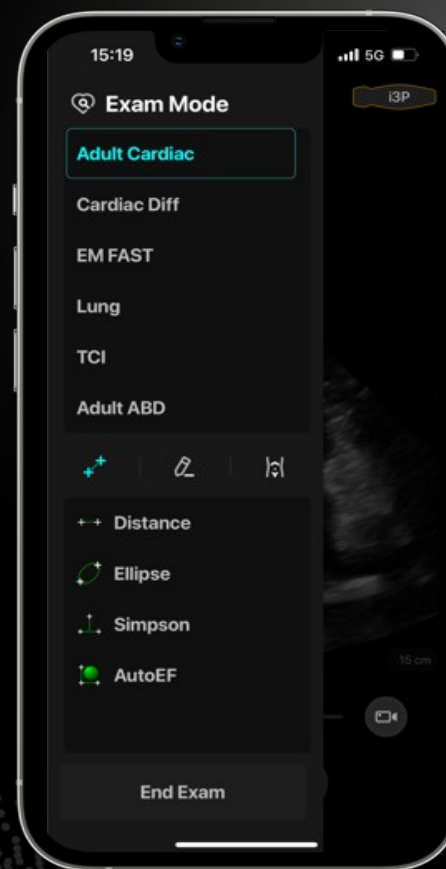
Professional ultrasound APP

Image review
and share

Measurement

Comment

Body mark



Measurement



Image review

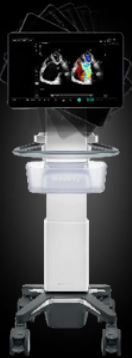
Untethered,
with Seamless Connectivity



More to WORK with



TEX20 Series



Advanced assessment
for difficult patient

Smart Phone



Easy and rapid
assessment

Other devices in future

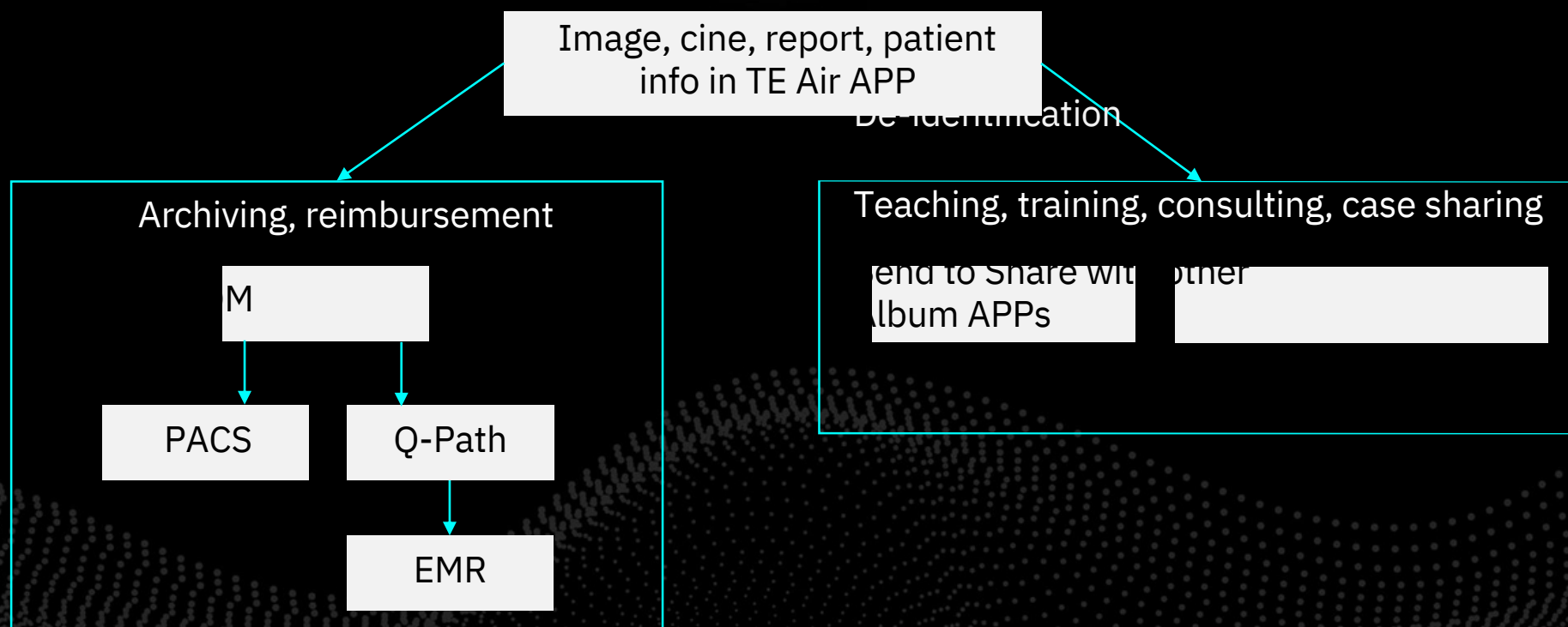


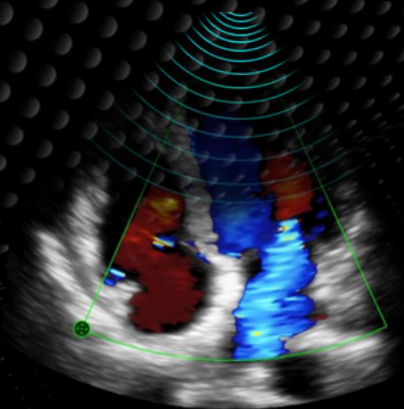
Professional information management

More ways to manage image data



No cloud required





Professional diagnostic grade

image quality



WORK with **multiple devices**



IP68 dustproof and waterproof



Air Capsule for all day usage

mindray

TE Air

Mindray wireless Handheld Ultrasound



Request a quote

Sales / customer service

sales@norsomedical.co.uk (NI)

sales@norsomedical.ie (ROI)

Website

www.norsomedical.com

Phone Number

Call 9:00 a.m. - 5:00 p.m. Monday - Friday

02890 343927 (NI)

01 5314337 (ROI)

